

# ONE WATER PLACE AT KELLY PLANTATION

SHEET OF

One Water Place Condos

A CONDOMINIUM - PHASE II,

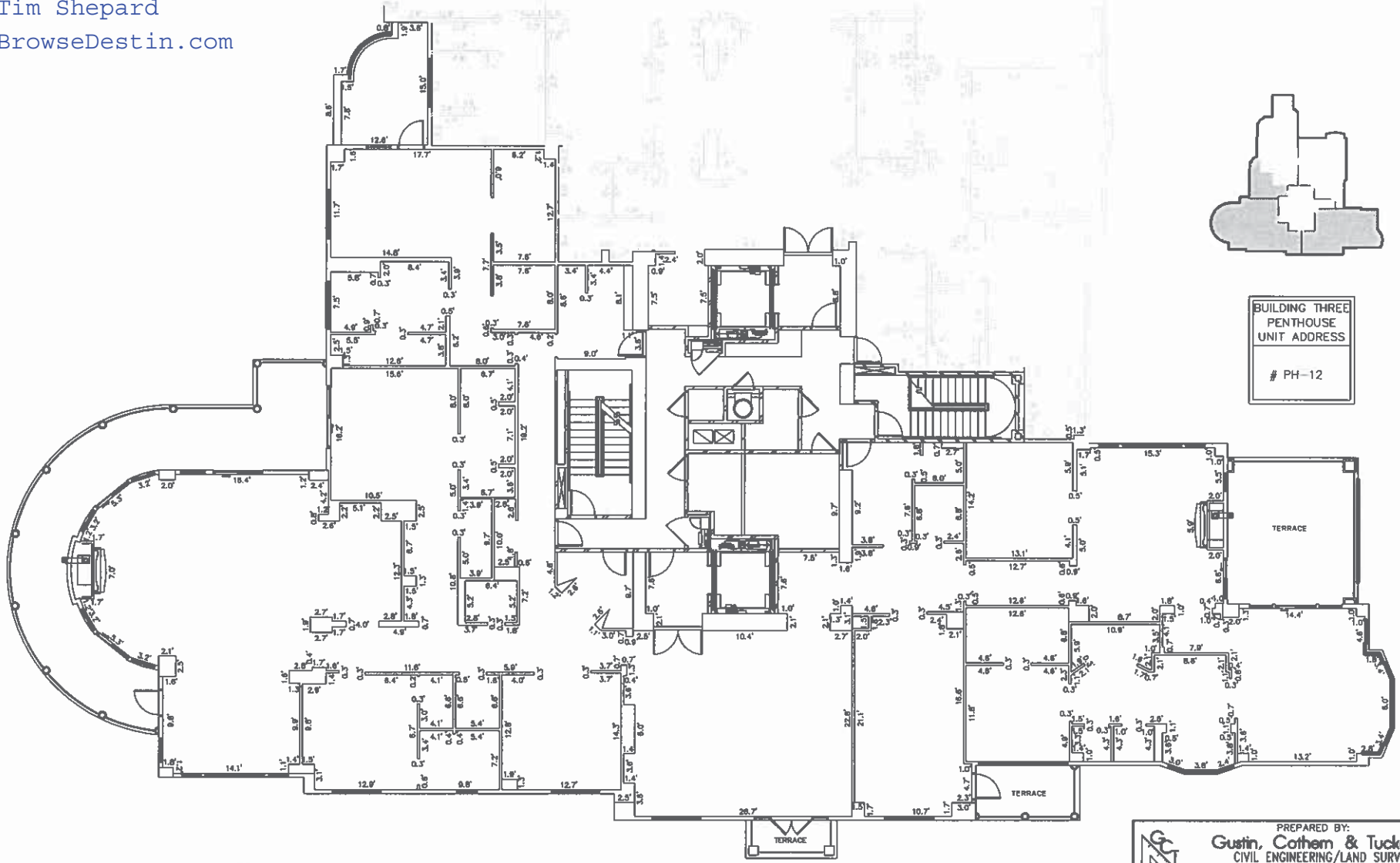
IN UNDIVIDED TOWNSHIP 2 SOUTH, RANGE 22 WEST, OKALOOSA COUNTY, FLORIDA

Destin Real Estate

APRIL 2010

Tim Shepard

BrowseDestin.com



BUILDING THREE  
PENTHOUSE  
UNIT ADDRESS  
  
# PH-12

## PENTHOUSE-SOUTH

NOTES:  
1. UNIT DIMENSIONS SHOWN HEREON MAY VARY 0.2±.

PREPARED BY:  
**Gustin, Cothran & Tucker, Inc.**  
CIVIL ENGINEERING/LAND SURVEYING  
121 HART STREET MOBILE, FL 32578 (904) 678-5141

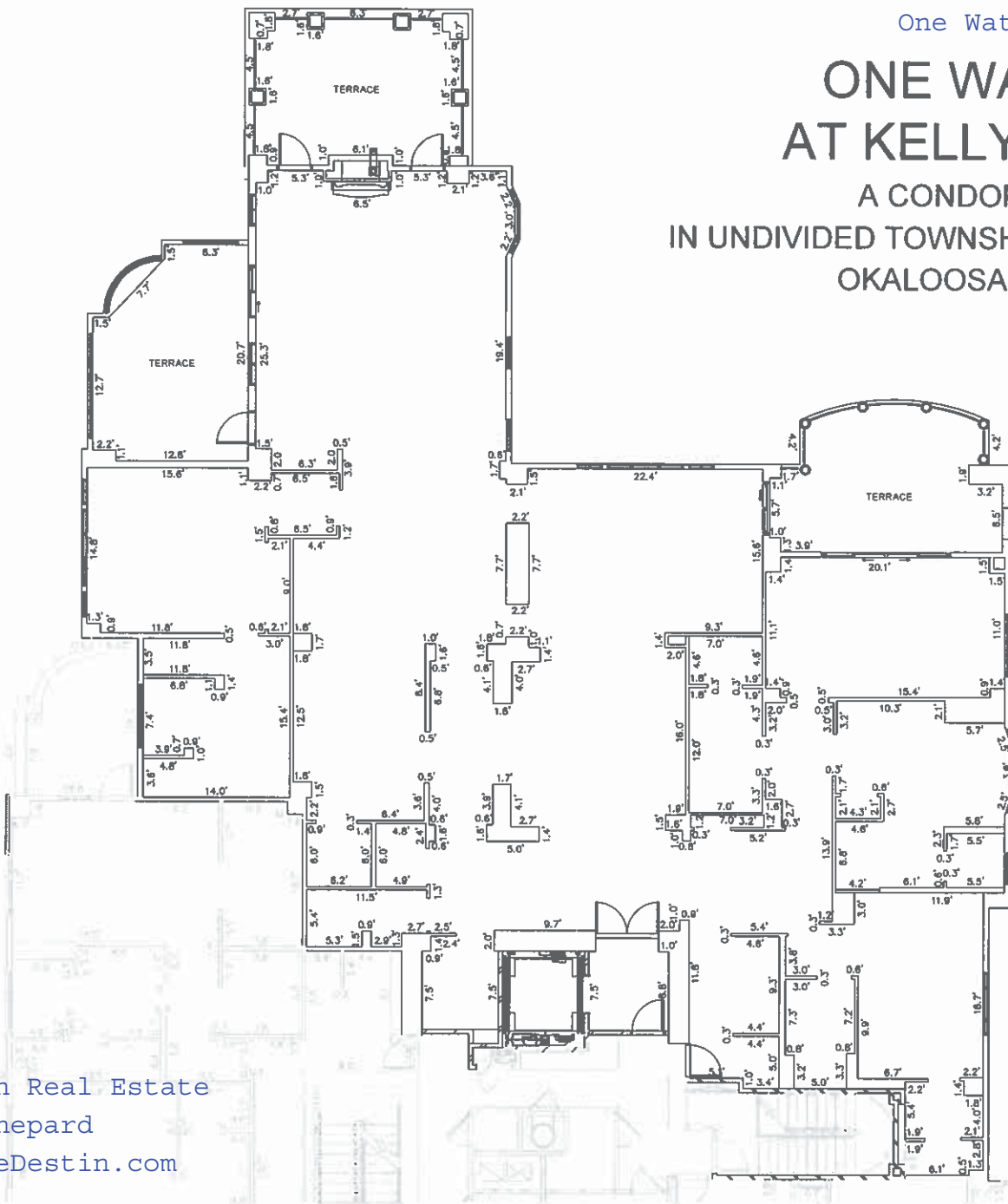
ONE WATER PLACE AT KELLY PLANTATION  
A CONDOMINIUM - PHASE II

One Water Place Condos

# ONE WATER PLACE AT KELLY PLANTATION

A CONDOMINIUM - PHASE II,  
IN UNDIVIDED TOWNSHIP 2 SOUTH, RANGE 22 WEST,  
OKALOOSA COUNTY, FLORIDA

APRIL 2010



PENTHOUSE-NORTH

BUILDING THREE PENTHOUSE UNIT ADDRESS  # PH-10
--

**NOTES:**

1. UNIT DIMENSIONS SHOWN HEREON MAY VARY 0.2±.

Destin Real Estate  
 Tim Shepard  
 BrowseDestin.com

	PREPARED BY: <b>Gustin, Cotham &amp; Tucker, Inc.</b> CIVIL ENGINEERING/LAND SURVEYING 121 HART STREET NICEVILLE, FL 32578 (850) 678-5141
	ONE WATER PLACE AT KELLY PLANTATION A CONDOMINIUM - PHASE II