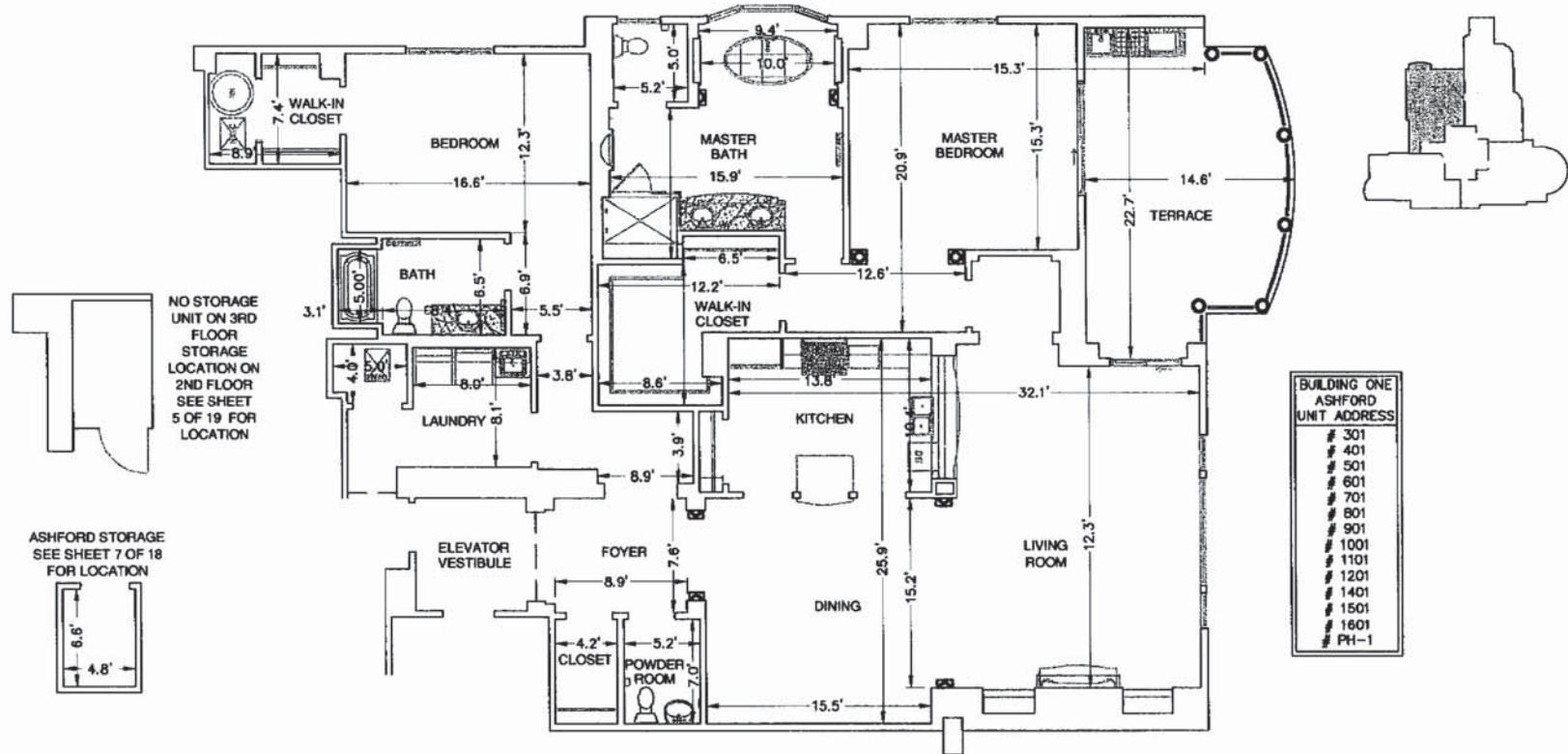


One Water Place Condos for Sale

ONE WATER PLACE

A CONDOMINIUM, IN UNDIVIDED TOWNSHIP 2 SOUTH,
RANGE 22 WEST, OKALOOSA COUNTY, FLORIDA
MAY 2007



BUILDING ONE	ASHFORD	UNIT ADDRESS
#	301	
#	401	
#	501	
#	601	
#	701	
#	801	
#	901	
#	1001	
#	1101	
#	1201	
#	1401	
#	1501	
#	1601	
#	PH-1	

3RD THRU 16 FLOORS
TYPICAL UNIT PLAN

Destin Real Estate
Tim Shepard
www.BrowseDestin.com

PREPARED BY:
Gustin, Cather & Tucker, Inc.
CIVIL ENGINEERING/LAND SURVEYING
121 HART STREET MOBILE, FL 36576 (850) 678-8141

ASHFORD

ONE WATER PLACE
A CONDOMINIUM

NOTES:
1. UNIT DIMENSIONS SHOWN HEREON MAY VARY 0.2±.